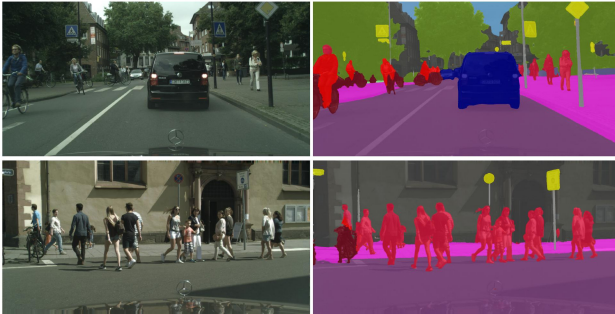


# Feature Space Optimization for Semantic Video Segmentation

A. Kundu, V. Vineet and V. Koltun (CVPR 2016)



- ▶ long-range spatio-temporal regularization in semantic video segmentation
- ▶ Temporal regularization is challenging because of camera and scene motion
- ▶ Optimize the position of pixels in a Euclidean feature space to minimize the distances between corresponding points
- ▶ Structured prediction is performed by a dense CRF operating on the optimized features
- ▶ Evaluation on CamVid and Cityscapes dataset and achieving state-of-the-art accuracy for semantic video segmentation