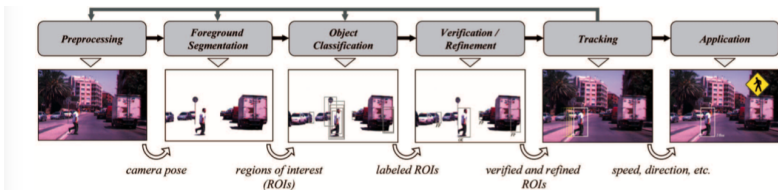


Survey of Pedestrian Detection for Advanced Driver Assistance Systems

D. Geronimo, A. M. Lopez, A. D. Sappa, T. Graf (PAMI 2010)



- ▶ In this paper, the focus is on a particular type of ADAS, pedestrian protection systems (PPSs).
- ▶ The objective of a PPS is to detect the presence of both stationary and moving people in a specific area of interest around the moving host vehicle in order to warn the driver
- ▶ Presents a general module-based architecture that simplifies the comparison of specific detection tasks
- ▶ Provides a comprehensive up- to-date review of state-of-the-art sensors and benchmarking
- ▶ Reviews different approaches according to the specific tasks defined in the aforementioned architecture
- ▶ Major progress has been made in pedestrian classification, mainly due to synergy with generic object detection and applications such as face detection and surveillance