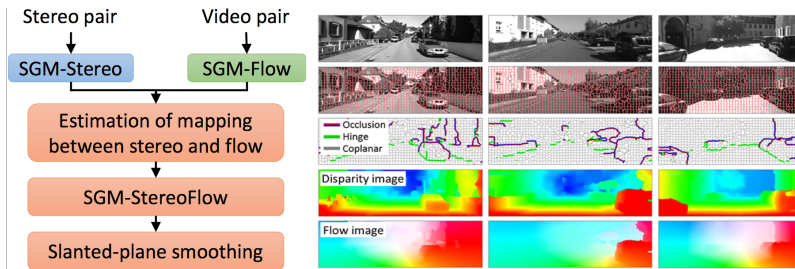


Efficient Joint Segmentation, Occlusion Labeling, Stereo and Flow Estimation

K. Yamaguchi, D. McAllester, R. Urtasun (ECCV 2014)



- ▶ Existing slanting plane methods involved time-consuming optimization algorithms
- ▶ Contributions:
 - ▶ Exploits the fact that in autonomous driving scenarios most of the scene is static
 - ▶ New SGM algorithm based on the joint evidence of the stereo and video pairs
 - ▶ New fast block-coordinate descent form of inference algorithm on a total energy involving the segmentation, slanted planes and occlusion labeling
- ▶ Evaluates on stereo and flow KITTI benchmarks
- ▶ Order of magnitude faster than competing approaches