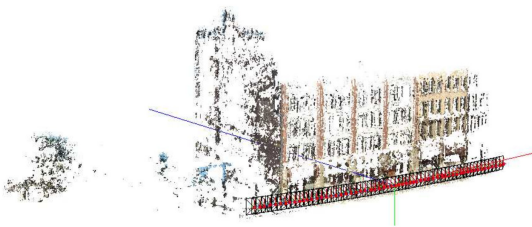
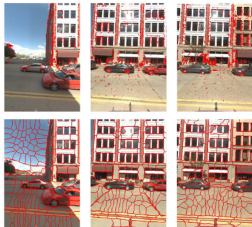


Multiple View Semantic Segmentation for Street View Images

J. Xiao and L. Quan (ICCV 2009)



- ▶ Multi view semantic segmentation framework for images captured by a car driving along streets
- ▶ Superpixel pairwise MRF over the entire sequence
- ▶ Spatial and temporal smoothness of semantic labels
- ▶ Boosting classifier as unary using image-based and geometric features from 3D reconstruction
- ▶ Training speedup and quality improvement with adaptive training that selects most similar training data for each scene from label pool
- ▶ Approach can be used for large-scale labeling in 2D and 3D space simultaneous
- ▶ Demonstration on Google Street View images