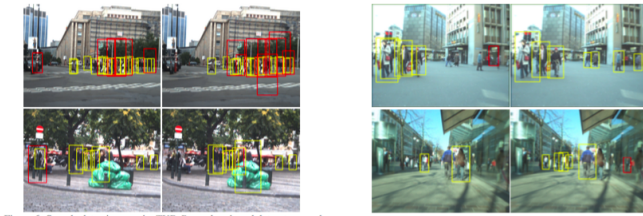


Multi-Cue Onboard Pedestrian Detection

C. Wojek, S. Walk, B. Schiele (CVPR 2009)



- ▶ Detecting pedestrians using an onboard camera
- ▶ Existing methods rely on static image features only despite the obvious potential of motion information for people detection
- ▶ Contributions:
 - ▶ Shows that motion cues provide a valuable feature, also for detection from a moving platform
 - ▶ Shows that MPLBoost and histogram intersection kernel SVMs can successfully learn a multi-viewpoint pedestrian detector and often out- perform linear SVMs
 - ▶ Introduces new realistic and publicly available onboard dataset (TUD-Brussels) containing multi-viewpoint data is introduced
- ▶ Evaluates on ETH-Person, TUD-Brussels dataset