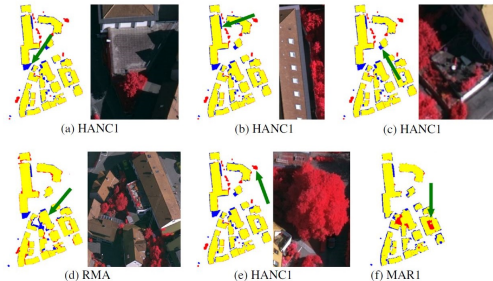


Results of the ISPRS benchmark on urban object detection and 3D building reconstruction

F. Rottensteiner, G. Sohn, M. Gerke, J. D. Wegner, U. Breitkopf and J. Jung (JPRS 2014)



- ▶ Extraction of urban objects from data acquired by airborne sensors
- ▶ Evaluation of methods for building detection, tree detection and 3D building reconstruction
- ▶ Considering ISPRS benchmark dataset, consisting of airborne image and laserscans
- ▶ Comparison and analysis to identify promising strategies and common problems
- ▶ Building detection can be satisfactorily solved for buildings larger than $50m^2$
- ▶ Tree detection successful in detecting large trees under favorable conditions
- ▶ Production of geometrically and topologically correct LoD2 buildings models still poses challenges