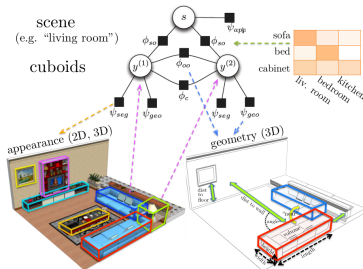
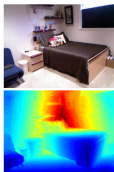


Holistic Scene Understanding for 3D Object Detection with RGBD Cameras

D. Lin, S. Fidler, and R. Urtasun (ICCV 2013)



- ▶ Indoor scene understanding using RGBD data (category level 3D object detection)
- ▶ By exploiting 2D segmentation, 3D geometry, and contextual relations
- ▶ Modelling both appearance and depth rather than monocular setting
- ▶ 3D cuboids as hypotheses in point clouds
- ▶ Ranking according to objectness in appearance
- ▶ Inference in a CRF to model the contextual relationships between objects, and scenes and objects
- ▶ Improves upon state-of-the-art on NYU v2 dataset