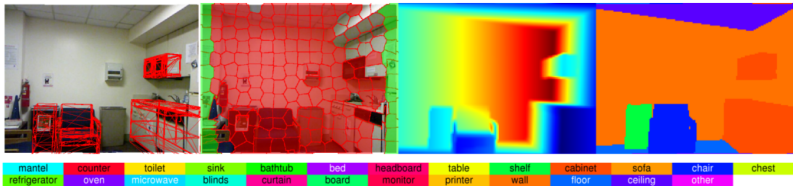


Joint 3D Object and Layout Inference from a single RGB-D Image

A. Geiger, and C. Wang (GCPR 2015)



- ▶ Inferring 3D objects and the layout of indoor scenes from a single RGB-D image captured with a Kinect camera
- ▶ A high-order graphical model to jointly reason about the layout, objects and superpixels in the image
- ▶ Sampling accurate 3D CAD proposals directly from the unary distribution
- ▶ Explicitly modelling visibility and occlusion constraints
- ▶ Improvements with respect to two custom baselines and state-of-the-art